

NEW HEAD OFFICE / GLENDALE FEDERAL SAVINGS

Look us over...

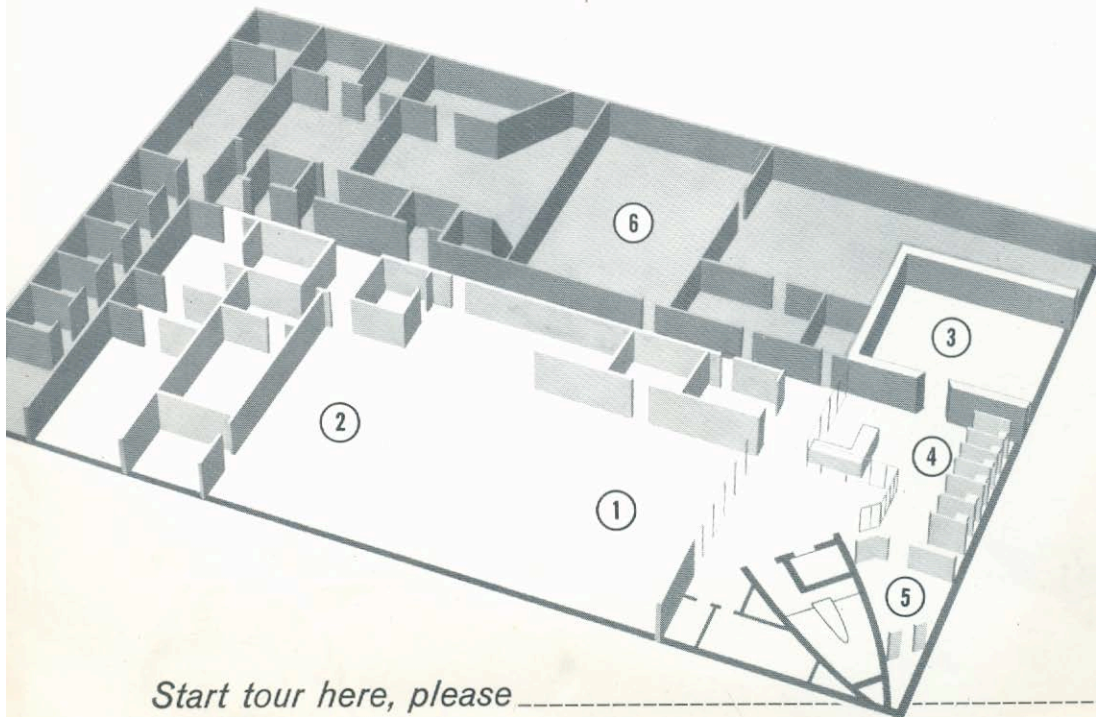
from TOP TO BOTTOM



Start tour here, please

LOWER LEVEL.... diagramed below, includes:

1. **CARILLON ROOM**...this beautiful and spacious lounge houses the 180 note Carillon Bell Console...will serve as a meeting place for business, professional and social organizations.
2. **STAFF LUNCH ROOM & LOUNGE**...in conjunction with Carillon Room can serve large community functions.
3. **SAFE DEPOSIT VAULT**...maximum security, fireproof safe deposit boxes for safely and conveniently storing important documents and personal valuables.
4. **SAFE DEPOSIT BOOTH**...attractive booths assure safe deposit box customers complete privacy and comfort.
5. **CONFERENCE ROOM**...for trustees, attorneys, executors, etc. for estate planning and related matters.
6. **GENERAL SERVICE AND EQUIPMENT AREAS**
...includes utilities, storage, equipment and service staff accommodations for the efficient behind the scenes operation of this nine story head office building and multi-branch organization.

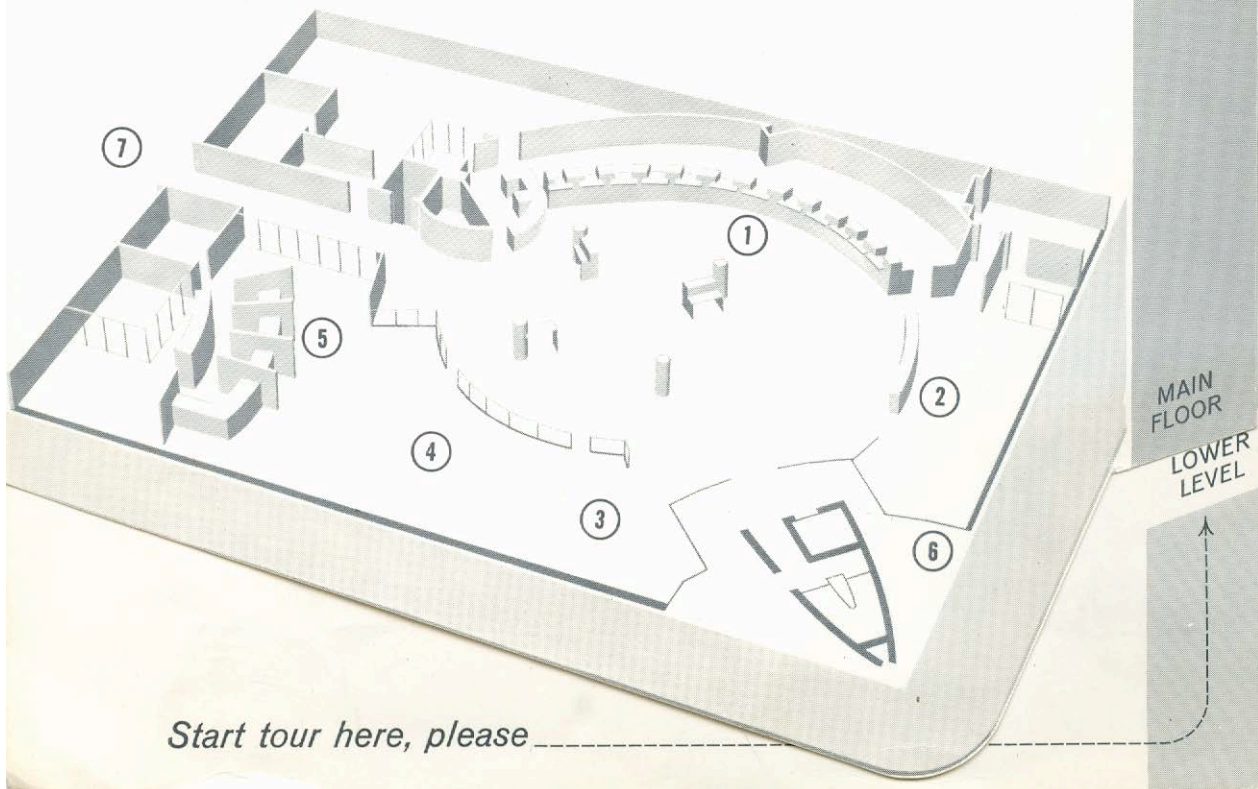


Start tour here, please.....

LOWER LEVEL
↑

MAIN FLOOR.... where the major services offered by Glendale Federal are located

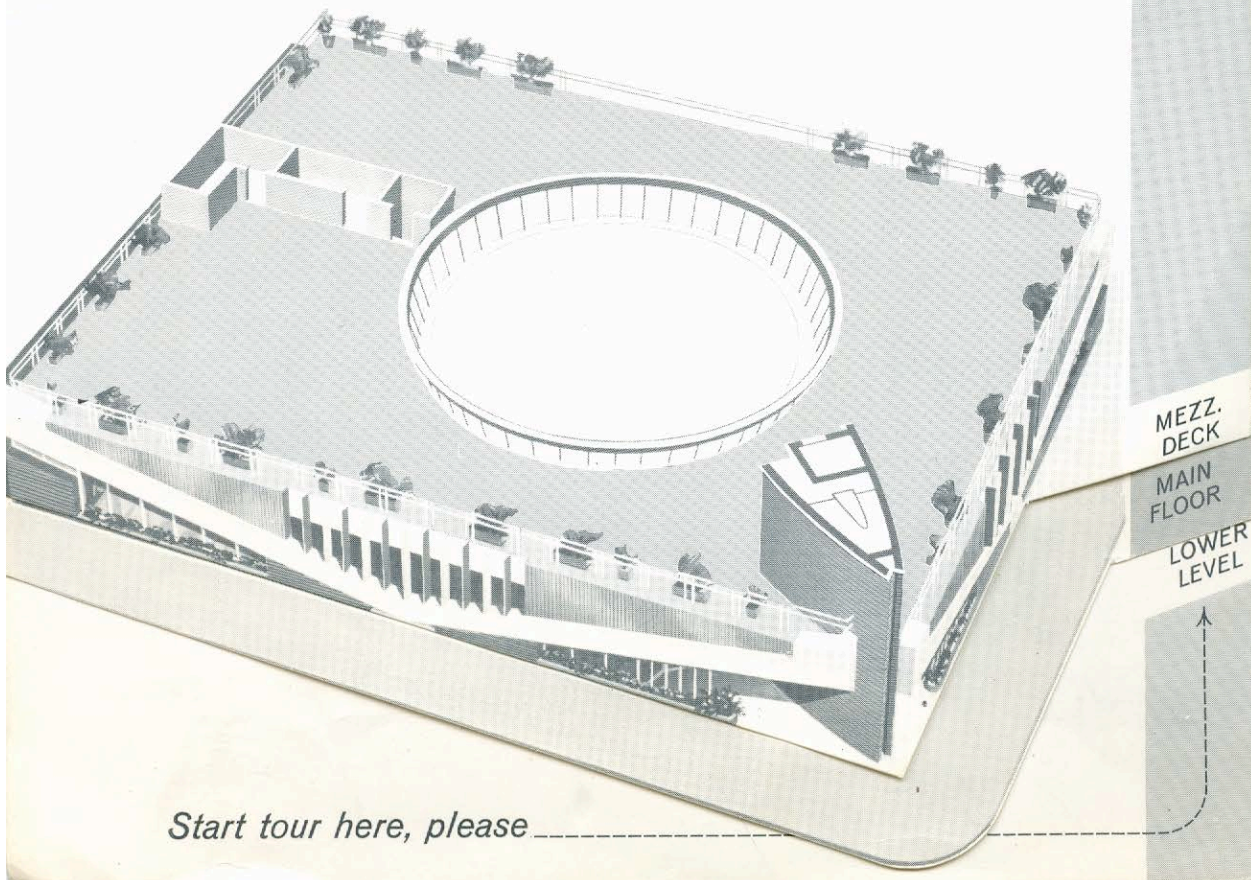
1. **SAVINGS DEPARTMENT**...modern equipment... efficient service...plus the friendly touch...a Glendale Federal tradition.
2. **NEW ACCOUNTS DEPARTMENT**...it's easy to open a new account at Glendale Federal Savings... and takes but minutes.
3. **HOME IMPROVEMENT LOAN DEPARTMENT**... to serve those interested in improving or modernizing their homes.
4. **HOME LOAN DEPARTMENT**...offers complete information and services for buying, building or refinancing property.
5. **ESCROW DEPARTMENT**...offers complete one-stop service on all types of escrows.
6. **FRONT ENTRANCE**...faces on Brand Boulevard, at the corner of Lexington Street.
7. **PARKING LOT ENTRANCE**...leads to parking area which accommodates 160 cars.



Start tour here, please

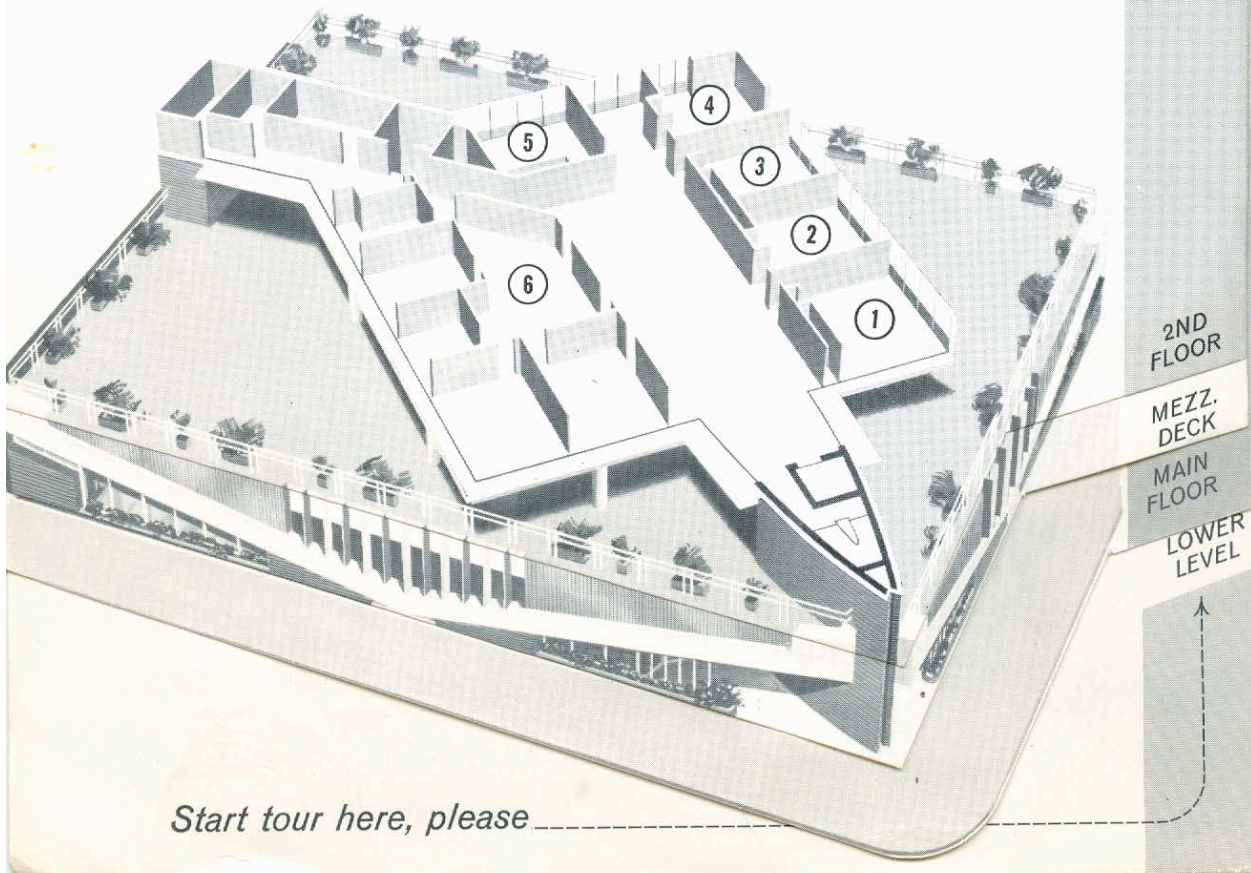
MEZZANINE DECK....

the dramatic, spacious mezzanine deck is a result of the unique design of the building which at this point is set at a 45° angle to the base. The Upper section is supported by slender pillars. This feature combined with the clerestory windows of the rotunda, makes the Upper section appear to float over the first level of the building. Another result is that the lobby rotunda is flooded with natural light. A garden area has been created on the mezzanine deck to add to the dramatic effect of the buildings' surface of glass, steel and concrete.



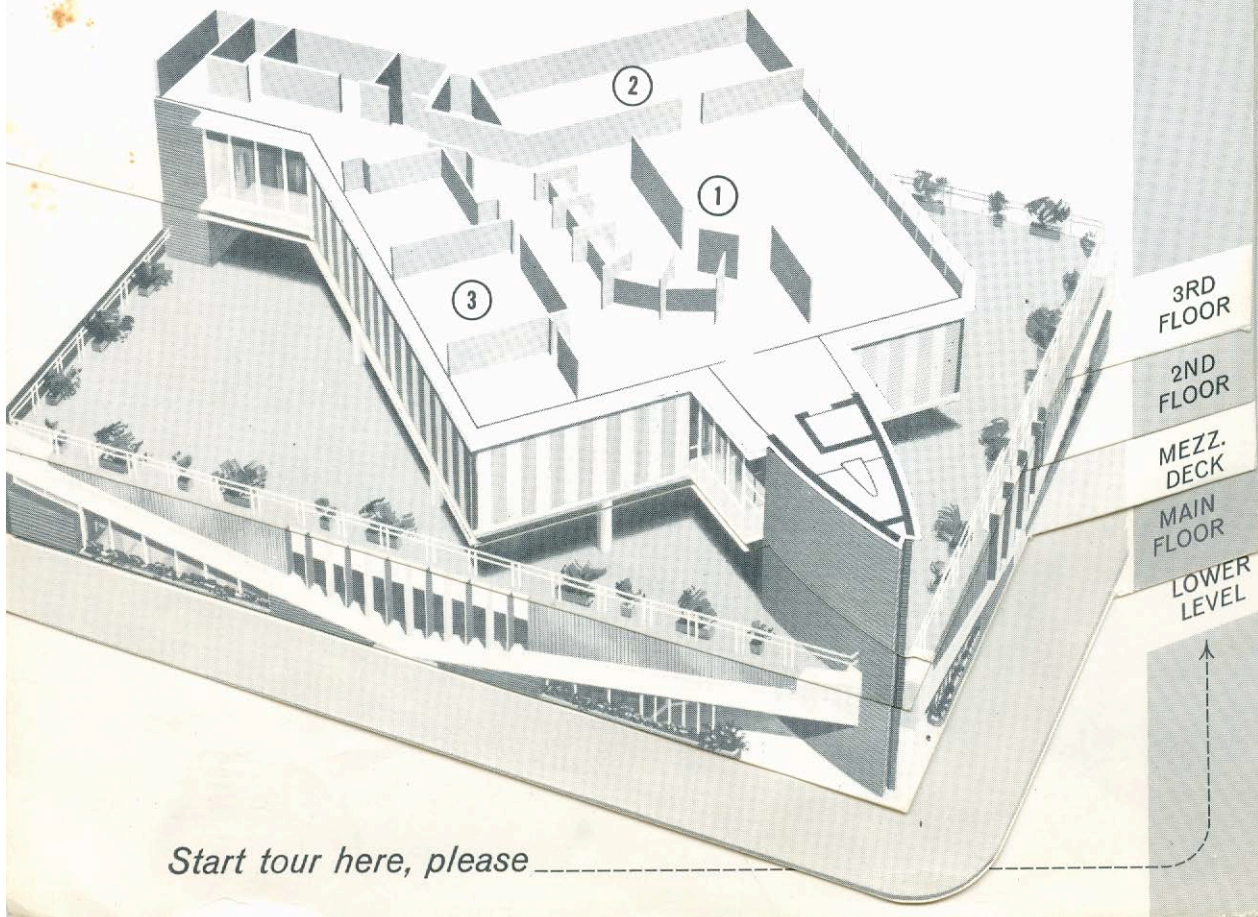
SECOND FLOOR....the executive offices,
personnel and public relations offices are located on this level.

1. **OFFICE OF THE PRESIDENT-FOUNDER,**
Mr. J. E. Hoeft.
2. **OFFICE OF THE EXECUTIVE VICE PRESIDENT,**
Mr. Charles Wellman.
3. **OFFICE OF THE ADMINISTRATIVE
VICE PRESIDENT,** Mr. Raymond Edwards.
4. **OFFICE OF THE OPERATIONS
VICE PRESIDENT,** Mr. D. A. Clarke.
5. **OFFICE OF THE INVESTMENTS
VICE PRESIDENT,** Mr. Jerre Hewitt.
6. **PERSONNEL AND PUBLIC
RELATIONS OFFICES.**



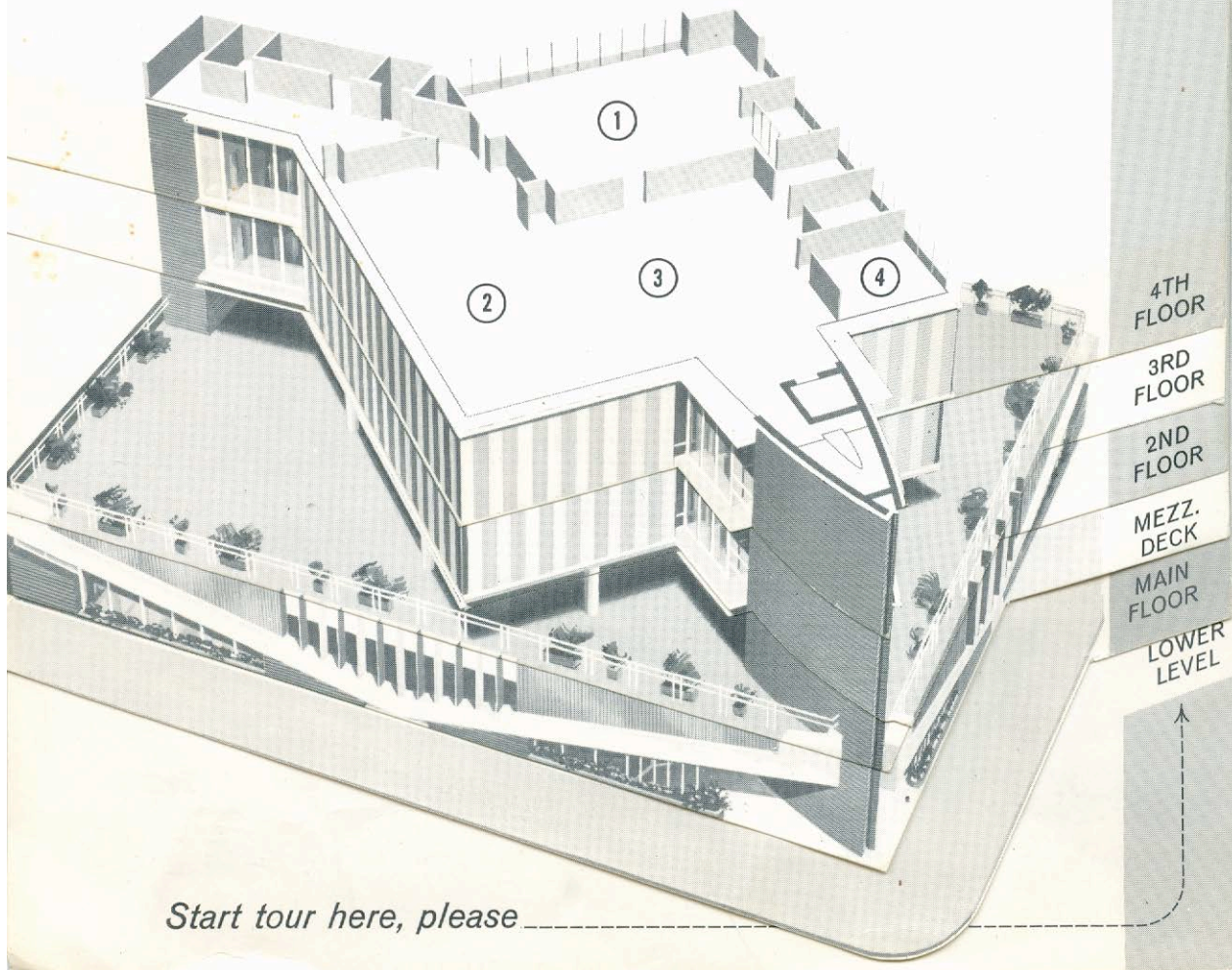
THIRD FLOOR.... Loan Service Officers
and their staff occupy this floor.

- 1. CUSTOMER SERVICE DEPARTMENT...**
loan counseling service offered here in private booths.
- 2. DOCUMENT VAULT...** this secure, fireproof vault
assures complete safety of all microfilm records
and loan documents.
- 3. AUDIT DEPARTMENT...** to assure normal business
safeguards and the efficiency of all procedures.



FOURTH FLOOR.... on this floor you step into the future where the Accounting Department accomplishes complex tabulations in microseconds...

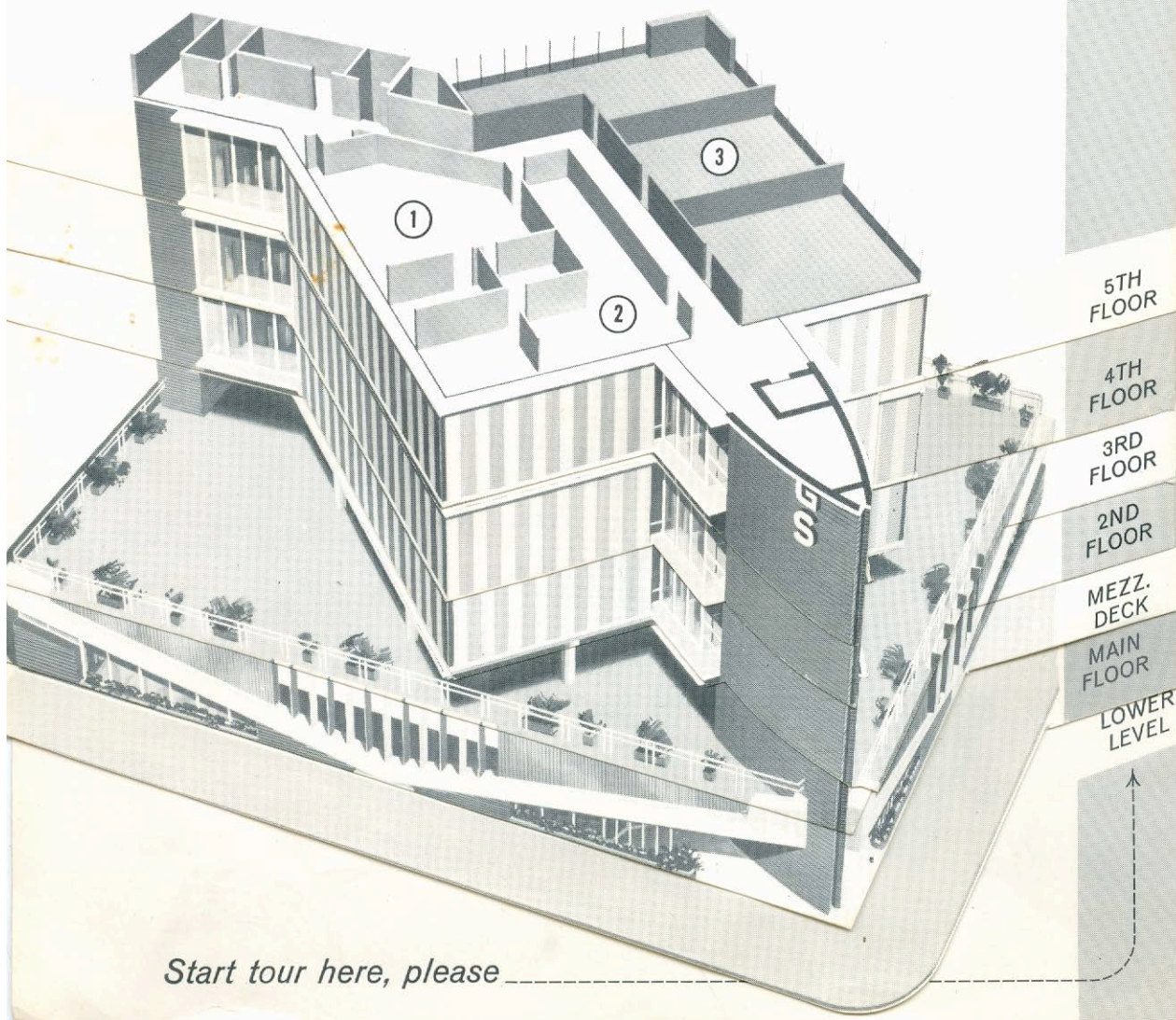
1. **"GUS", THE GLENDALE UNIVAC SYSTEM...** this electronic brain is the key to the Association's electronic data processing system which is a model for the entire financial industry.
2. **LOAN AND SAVINGS ACCOUNTING...** here the work of "GUS" is tabulated and processed.
3. **GENERAL ACCOUNTING...** general accounting records of the Association are maintained here.
4. **OFFICE OF THE TREASURER...** Kenneth S. Kubik.



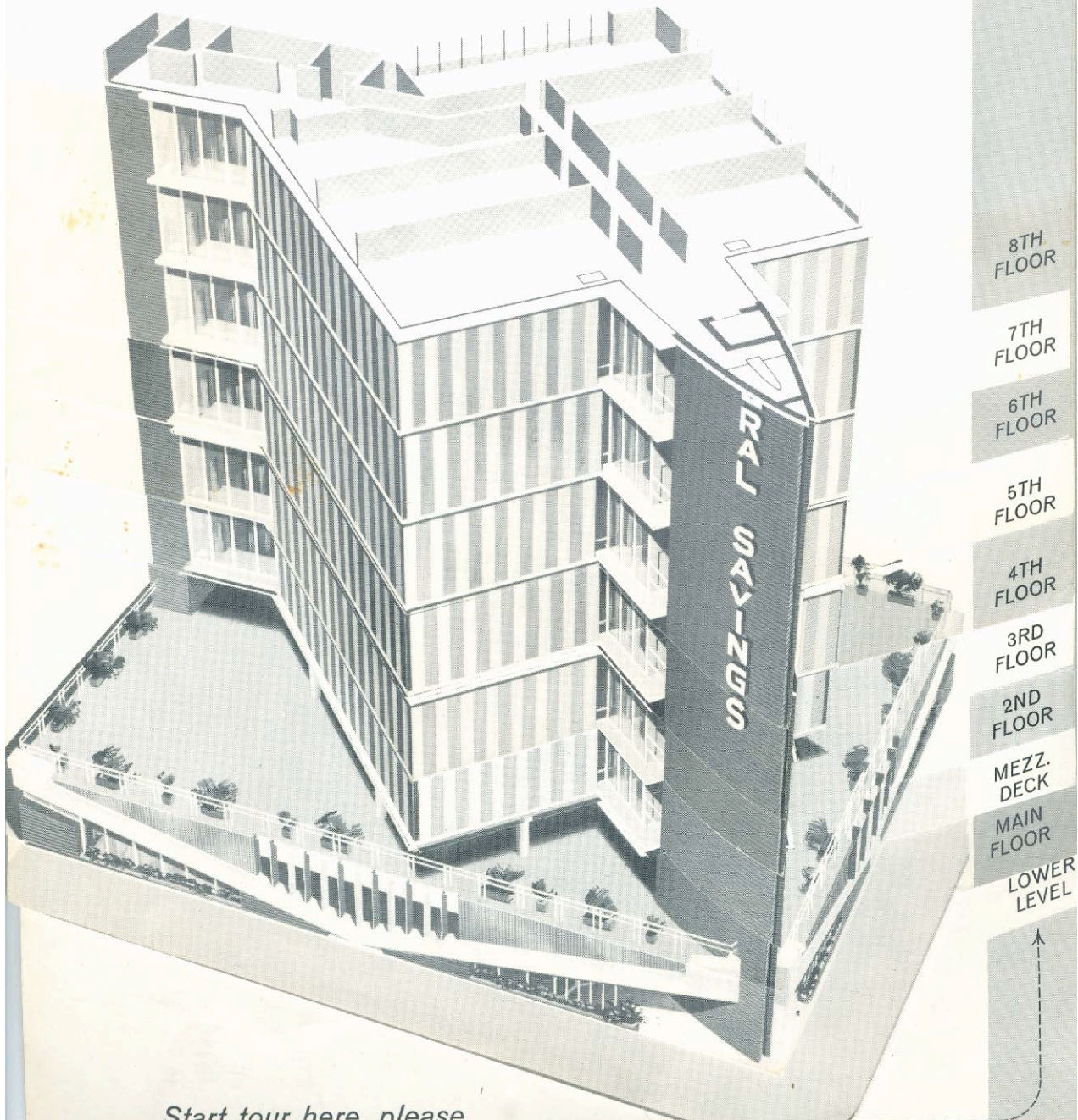
Start tour here, please

FIFTH FLOOR.... half the space here is utilized by the Association's Appraisal and Construction Departments—the other half is rental area.

- 1. APPRAISAL DEPARTMENT**... headquarters for personnel concerned with the appraisal and valuation of properties upon which the Association makes loans.
- 2. CONSTRUCTION DEPARTMENT**... for recording, processing and appraising all scheduled payments in connection with construction loans which the Association has made.
- 3. TENANT OCCUPIED AREA**... three and a half floors are offered as general office space for other business and professional services.



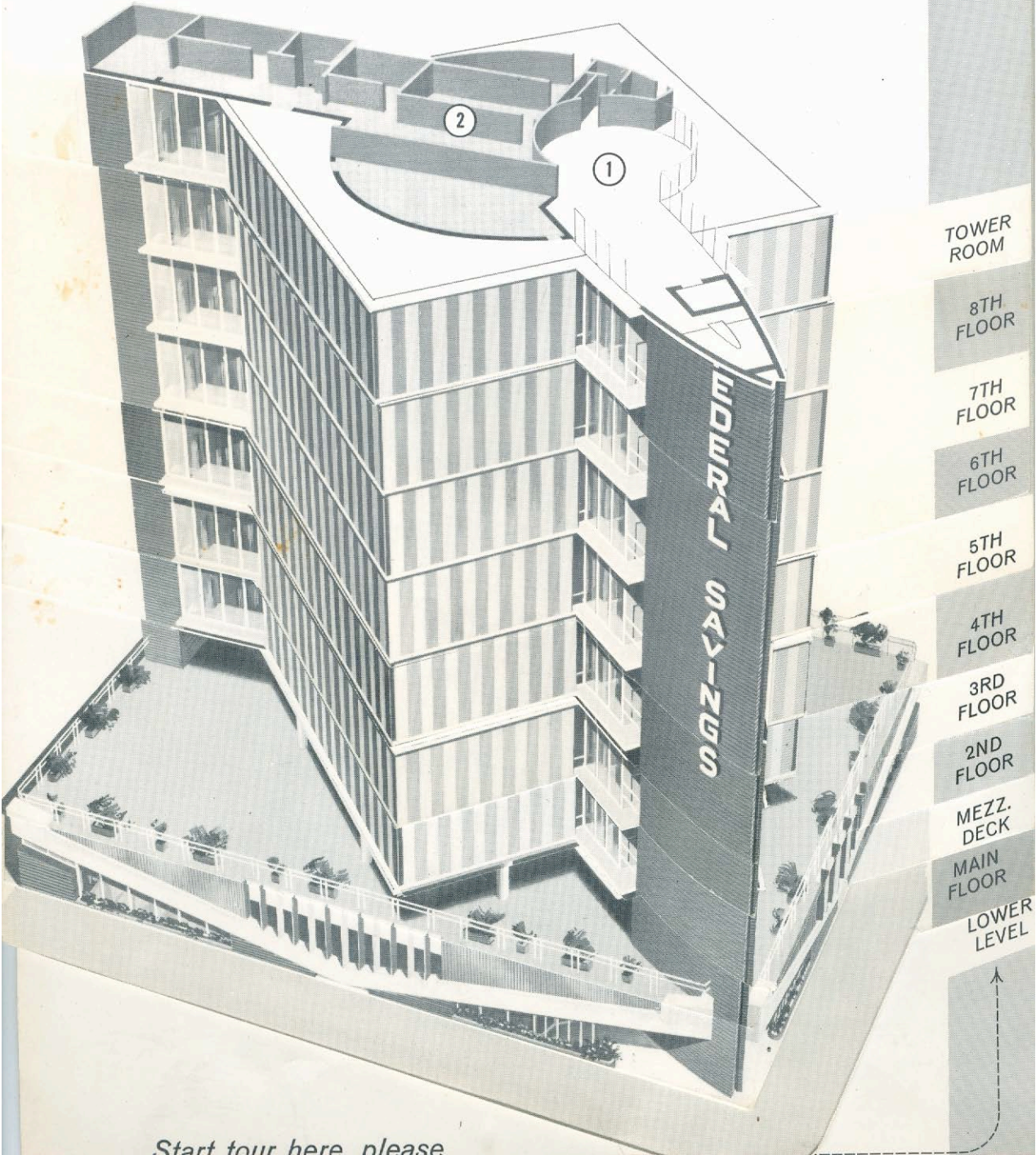
SIXTH, SEVENTH, EIGHTH
FLOORS....fine, modern, air-conditioned offices
with magnificent views which are tenant occupied. For
inquiries regarding available space see the Building Manager.



Start tour here please

TOWER ROOM

1. **TOWER ROOM**...towering high above the City of Glendale, providing a panoramic sweep of the entire Glendale area, the Verdugo Hills and San Fernando Valley is this magnificent Board of Directors meeting room. Other uses will include special civic and industry meetings.
2. **AIR CONDITIONING**...equipment to provide complete air conditioning for top four floors.



Start tour here please

*For the consideration of
the factually-inclined mind*

HEIGHT: Glendale's tallest... 9 stories... 132 ft. high. You can see clear to Santa Catalina Island from Tower Room (on smogless day, of course).

OFFICE AREA: Glendale's largest office building, too... 80,000 sq. ft. under roof.

SITE: Brand Boulevard and Lexington Drive in the heart of downtown Glendale... 124,000 sq. ft. of land.

AIR-CONDITIONING: Refreshingly climate controlled, complete air change every 4 minutes by mammoth air conditioning unit makes doing business a pleasure, here.

OTHER FACTS AND FEATURES:

- Two electronically-operated elevators... quietly float you to your floor.
- Hi-fi music system sets a mood of pleasant relaxation throughout.
- Three giant vaults—miniature Fort Knoxes... maximum security for your funds.
- 4,800 Cubic Yards of Concrete poured and not a famous footprint in sight!
- 400 Tons of Steel used... Strength to match our financial stability
- 28,000 sq. ft. plate glass... exterior skin of porcelain enamelled steel.
- \$2.8 Million Total Investment... Land, Building and Equipment

ARCHITECT AND DESIGNER: Bank Building Corp.

Chief Designer: W. A. Sarmiento

Architect: Melvin Rojko

CONTRACTOR: The Wm. Simpson Construction Co.



Head office building

Home of the Thrift Twins
**GLENDALE
FEDERAL
SAVINGS**

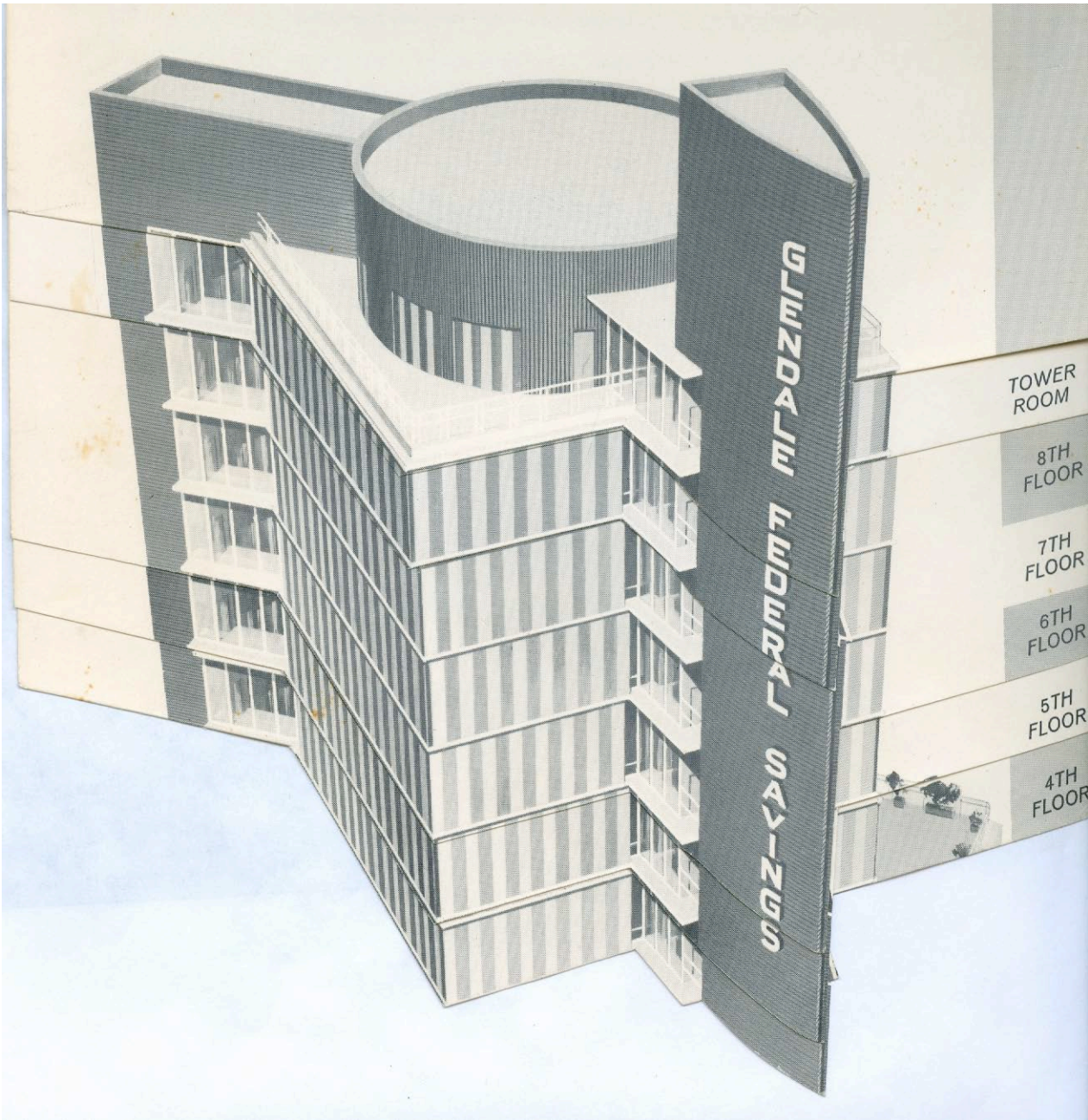
AND LOAN ASSOCIATION

401 No. Brand Blvd., Glendale, California

To Serve You Better...

is the single goal of the new Glendale Federal Head Office Building. Modern, functional, engineered with every device and facility required in a *tomorrow-thinking* financial institution. Towering nine stories above the street level, the building is a refreshing departure from the static cube-shaped structure. Among its many innovations are solar-controlled louvres, closed circuit TV and a special electronic communication system that ties all nine Glendale Federal offices into a highly efficient network of operations.

This guide book of the main features and important offices of Glendale Federal Savings' new Head Office Building has been designed to help you gain a greater understanding of the facilities and services offered by the Association. We hope you will visit us often.



TOWER ROOM

8TH FLOOR

7TH FLOOR

6TH FLOOR

5TH FLOOR

4TH FLOOR